

[Subscribe](#)[Past Issues](#)[Translate ▾](#)[RSS](#)

NCI eNewsletter April 2023

[View this email in your browser](#)

April 2023

[nci.org.au](https://nci.org.au)

Dear NCI users,

Welcome to the April edition of NCI's newsletter! We have some exciting updates and research highlights to share with you this month.

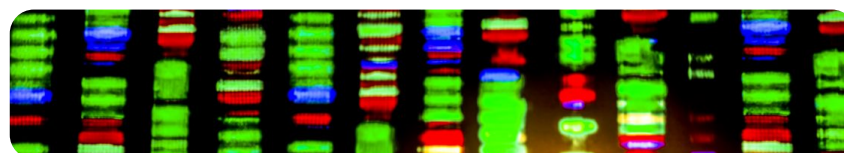
Firstly, we feature recent research that sheds light on [why severe COVID-19 develops](#). The study from the international PREDICT-19 consortium, which relied on bioinformatics expertise and HPC resources at NCI, has identified key genetic factors that increase the risk of developing severe COVID-19, providing valuable insights into the disease and potential treatments.

Don't forget that applications are now open for the [Adapter Allocation Scheme Q3 2023](#) round. This scheme provides access to supercomputing, cloud and storage resources for meritorious researchers, with a simple and fast application process that welcomes ECRs to submit their own grant proposals.

In other news, we are thrilled to be announcing the scientific stream programs for the upcoming [ALCS 2023](#) symposium. These streams cover a wide range of topics in supercomputing, data, AI/ML and scientific research, and we look forward to all the great talks that will be taking place.

Finally, we are highlighting NCI's VizLab and [its role in communicating geophysics breakthroughs](#) to the world. The [Vizlab](#) uses advanced visualisation techniques to create stunning visual representations of scientific data, making it more accessible and usable for scientists and the general public.

Kind regards,  
Sean - NCI Director



## Better understanding why severe COVID-19 develops

NCI supercomputing resources and bioinformatics expertise have improved our understanding of the differences between mild/moderate and severe COVID-19, helping to [unravel how severe disease develops](#).

The workflows used for processing genomic data of this type were developed to work efficiently and powerfully on the Gadi supercomputer. As genomic analyses of big patient cohorts become more common in research, close collaboration between researchers and the computing and data infrastructures they use will be crucial to getting the best science outcomes.



## Adapter Allocation Scheme Q3 2023 applications are now open

Adapter is designed for research needing smaller computing and data resources in short bursts. The application is quick and easy, and ECRs are recommended to apply!

[Learn More](#)

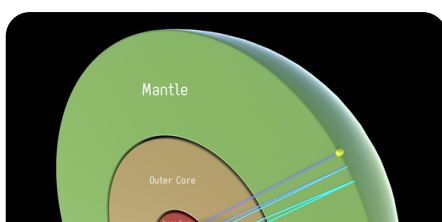


## ALCS2023 Stream Programs announced

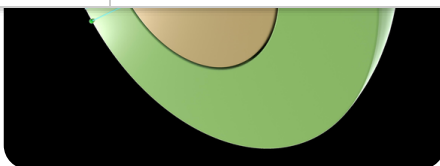
Visit the event website to see the talks in our ALCS streams: Earth System Science, Bioinformatics, Astronomy, CFD, Engineering and Physics, and Art and Social Science.

[Learn More](#)

## Recent Highlights



## NCI's Vizlab helping to communicate geophysics



## the world

NCI helped an ANU researcher's discovery about the innermost inner core of the Earth get featured in international news.

[Learn More](#)

## Upcoming Training

Skills sharpening training sessions for NCI users are now available through to the end of May, along with other training sessions over coming months. These fill up fast, so get in quick to reserve your spot in an upcoming session! **Registration is essential.**

Registration details and all upcoming NCI training sessions are listed on our [NCI Training and Educational Events](#) page.

Upcoming sessions include:

- 18-19 May, [Getting started with HPC using PBS Pro](#)
- 23-24 May, [Learn to Program: R](#)
- 26 May, [Introduction to Gadi](#)
- 31 May-1 Jun, [Data Manipulation and Visualisation in R](#)

## Service Updates

Every month, NCI's User Services Team updates the software available on Gadi with new versions and new packages.

In April, 9 new applications were installed, including:

- canu/2.2
- plumed/2.8.2
- nextflow/23.041

See the full list [here](#).

NCI's Data Collections Team manages and updates the datasets stored for use by Australian researchers.

Recently released datasets include:

- [Collaborative REAnalysis Technical Environment Intercomparison Project](#) (CREATE-IP)
- [ANUClimate 2.0](#) (new datasets added)
- [ESGF CMIP6](#) (new datasets added)
- [ERA5 Replicated Datasets](#) (new products added)

See the full NCI data catalogue [here](#), and see all the monthly releases [here](#).



[Subscribe](#)

[Past Issues](#)

[Translate](#) ▼

[RSS](#)



*Copyright (C) 2023 National Computational Infrastructure. All rights reserved.*

Our mailing address is:

Want to change how you receive these emails?

You can [update your preferences](#) or [unsubscribe](#)